



PRIBOR

SELF-AWA<sup>®</sup>E MACHINES



# Welcome to Pribor

## **Mission**

To revolutionize AI by developing Self-Aware Machines that learn and evolve like humans.

## **Vision**

To create AI that offers unprecedented transparency and can be integrated into everyday life.

## **The Future**

Join us as we step into the future of AI, where machines understand, learn, and interact in ways never before possible.

# Project Status

## Technical Due Diligence

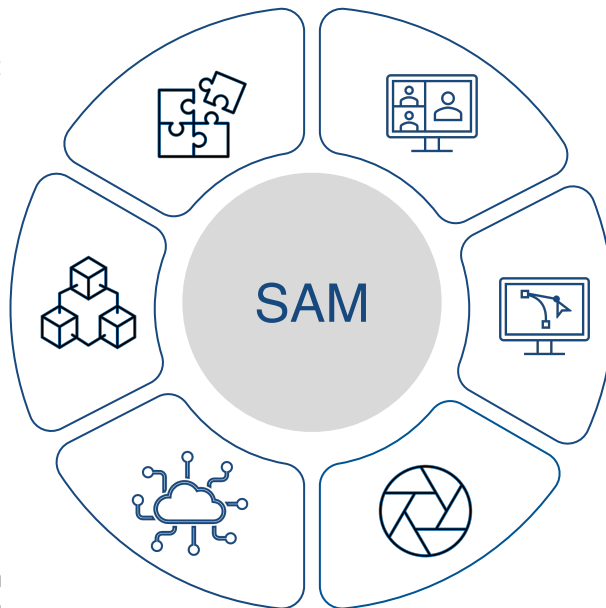
We have confirmed that the required technology is available at affordable costs

## Project Specifications

The State of Requirements (SoR) and associated technical specifications have been developed

## Software Audit

ANELLA software v01 (Associative Network with Emergent Logical and Learning Abilities) has been audited



## Team recruitment

The initial technical team has been recruited and a manpower plan has been developed

## Simulation Development

A multi-agent simulation of human society has been created

## Proof of Concept

POC has been fully developed and tested

---

**Pribor has made significant progress, securing 250 k€ in funding, and laying the groundwork for the development of Self-Aware Machines with a solid foundation, a skilled team, and a clear roadmap.**

---

# The Transparency Issue in AI

**1**

## Explainability

Current language models, like GPT-4, are built top-down, making them inexplicable. They generate outputs based on the data they've been trained on, but they can't explain why they generated those outputs

**2**

## Traceability

These models are trained on large amounts of data all at once, and it's difficult to trace how they arrive at specific outputs. We can't 'look under the hood' because the meaningful processing happens in artificial neural networks

**3**

## Opacity

The lack of transparency in current models is a significant problem. It limits trust in AI systems, restricts their potential applications, and hinders the advancement of AI research

---

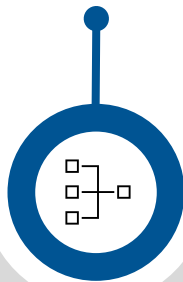
**The 'black box' nature of current AI models limits their potential. Our goal is to bring transparency to AI, enhancing trust and expanding possibilities.**

---

# Addressing Limitations of LLMs

## Traceability

Our Self-Aware Machines (SAM) build knowledge one node and edge at a time, creating a clear, traceable path of learning



## Enabling New Apps

Traceability and explainability enable new applications of AI in fields where understanding AI decisions is crucial



## Advancing AI Research

Our approach provides a new way of building and understanding language models, inspiring further innovation in the fields



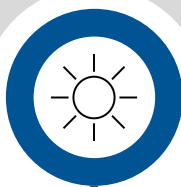
## Explainability

Our model learns like a human, asking questions and building knowledge in a way that's tied to specific pieces of information, enhancing explainability



## Building Trust

Increased transparency builds trust in AI systems



## Democratizing AI

Making AI more understandable and accessible, our model helps democratize AI



# Associative Network with Emergent Logical and Learning Abilities

## ANELLA

At Pribor, we're building a language model from the bottom-up. Unlike traditional models, our model's memory isn't a pre-designed neural network, but is built step by step, one node and edge at a time

### Recording New Knowledge

Each new piece of information is explicitly linked to existing knowledge, creating a clear, traceable path of learning. This allows for a much higher level of traceability and explainability than is possible with top-down models



### Learning Like a Human

Our model learns in a way that's more similar to how humans learn. It asks questions and builds its knowledge base in a way that's tied to specific pieces of information. This makes it much easier to explain why the model is generating certain outputs

### AI On-the-Go

Our technology enables Edge AI, allowing users to take powerful AI capabilities everywhere without the need for heavy data center resources. This decentralization opens up new possibilities for AI applications and makes AI more accessible and useful in everyday life

---

**ANELLA is a revolutionary solution that addresses the limitations of current AI models.**

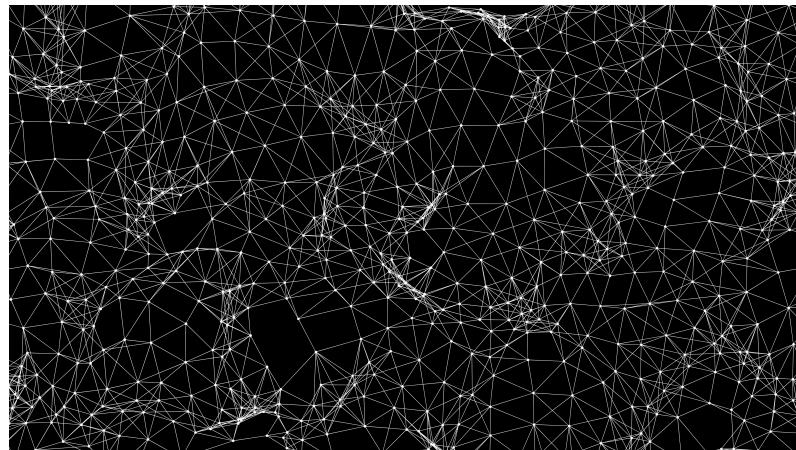
---

# A New Approach to AI

Top-down

vs

Bottom-up

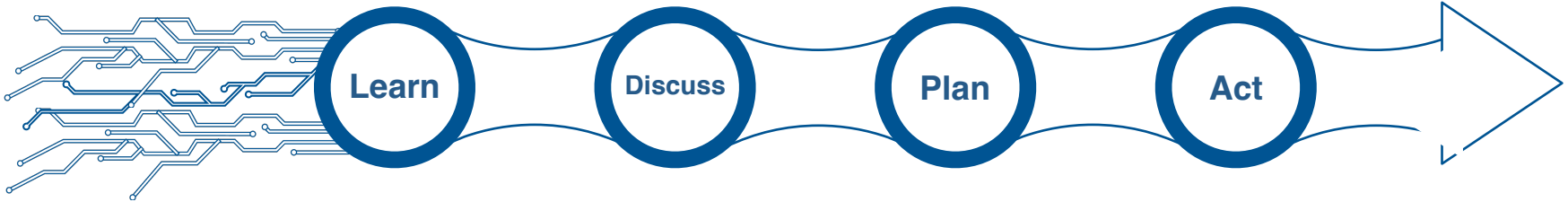
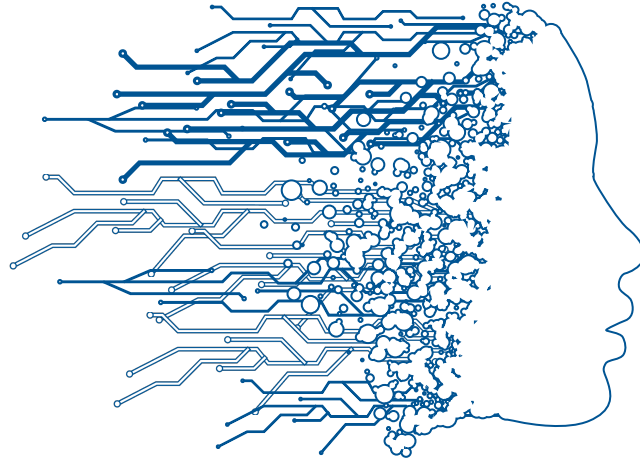


---

By building knowledge step by step, we're making AI more transparent, accessible, and useful.

---

# SAM Product Overview



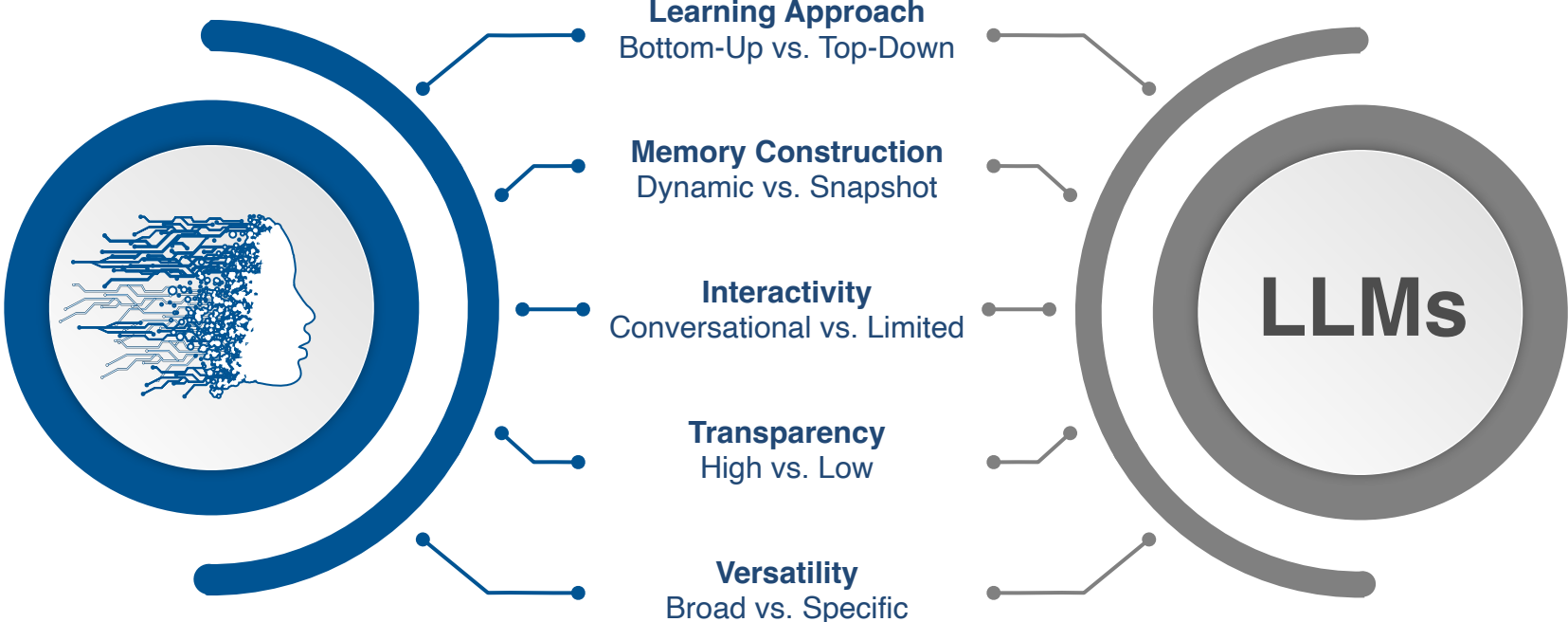
---

**SAM, a robot aware of its own existence, defining its objectives based on its own history. It learns from experiences, interacts conversationally, and offers total transparency. We are ready to bring AI capabilities to every corner of life.**

---



# SAM vs. Traditional Large Language Models (LLMs)



# Our Edge

01

## Pioneers

First to commercialize Self-Aware Machines.

02

## Innovation

Disruptive bottom-up AI approach.

03

## Versatility

Lightweight and adaptative to various applications.

04

## Personalization

AI that learns and behaves like a human.

Innovation

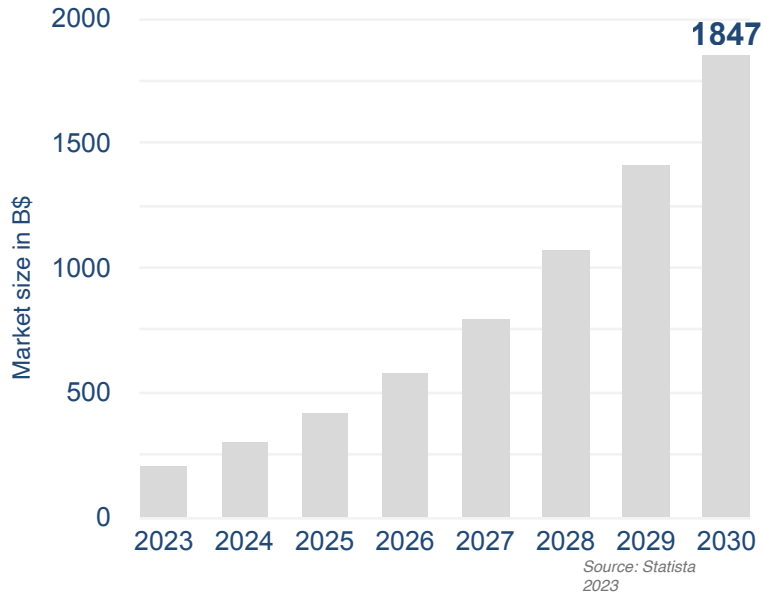


Potential Impact

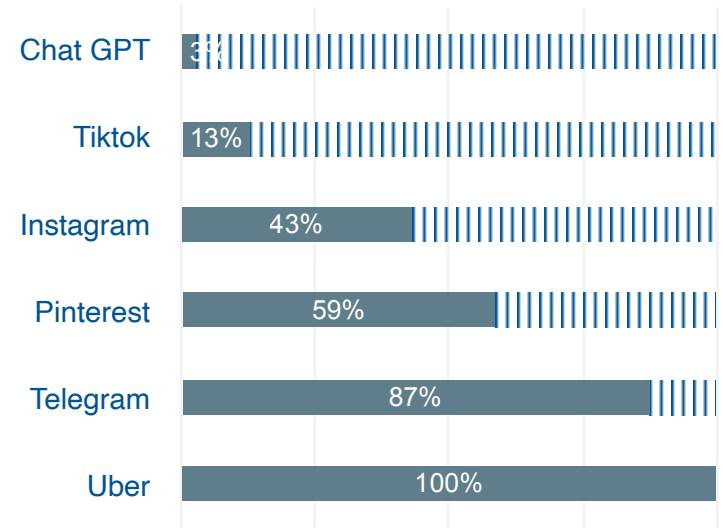
Pribor is pioneering a new era of AI with our innovative, versatile, and personalized Self-Aware Machines. Our technology has the potential to make a significant impact in the AI market.

# Tapping into a Vast and Growing Market

AI Market Forecast

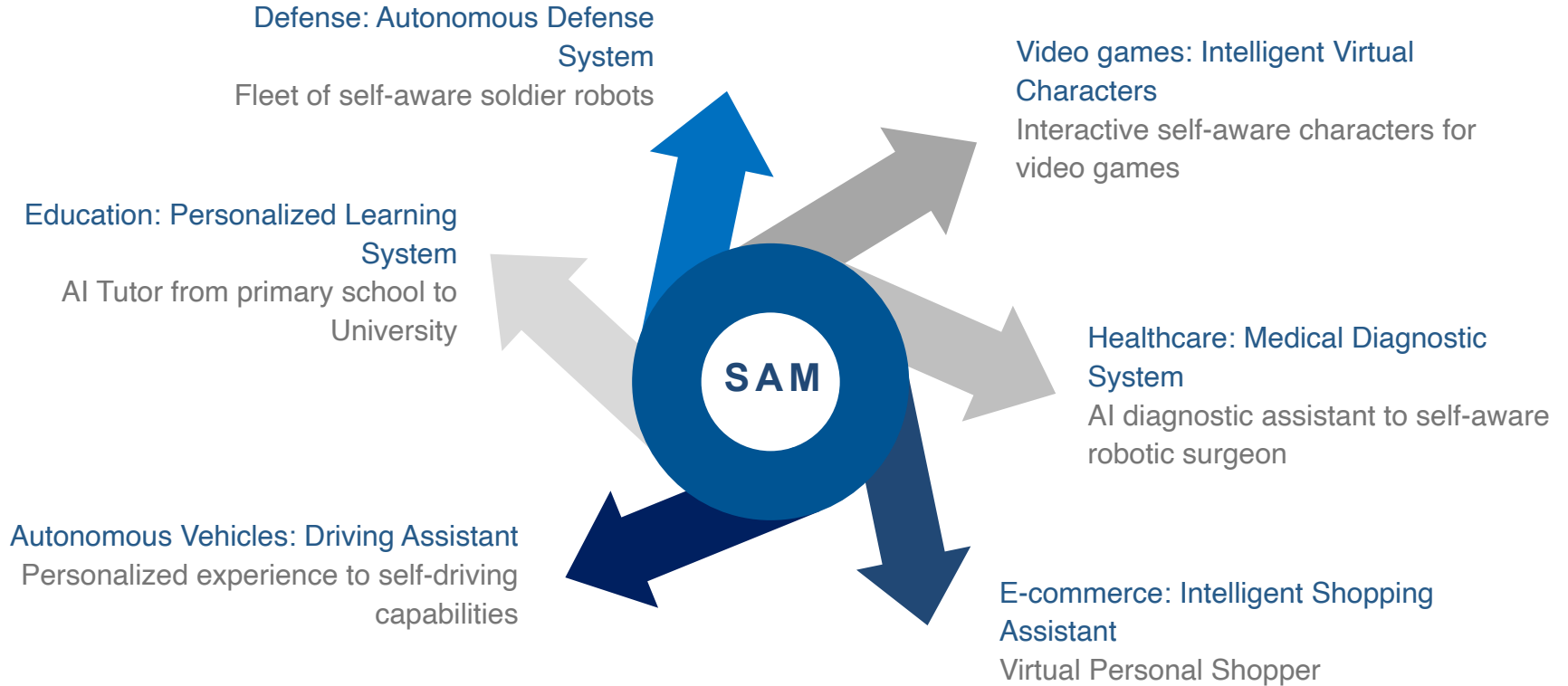


Time to reach **100 million** monthly active users  
No. of months



**With its wide range of applications and the vast, growing market for AI, SAM represents a significant investment opportunity. We're not just selling a product, we're offering a gateway to the future of AI.**

# Key Use Cases



---

**SAM has a wide range of potential applications, making them highly versatile and marketable.**

---

# Business model

## Corporations

Limited Trials

Usage-based Pricing

Business case

customization

Revenue Share

## Individuals

Freemium

\$20 monthly

subscription

Extra-modules charge

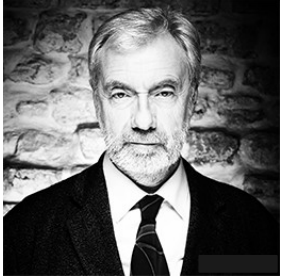
Marketplace access

---

**A unique blend of licensing, specific product development, usage-based pricing, and revenue sharing.  
As pioneers, we are poised to capture a significant market share and deliver substantial value to our customers  
and investors**

---

# Meet the Team



## **Paul JORION**

### **President and CTO**

Ph. D. Formerly fellow of Pembroke College (Cambridge University U.K.)

AI researcher, Software developer (HFT, risk management)

Financial Expert (IndyMac Bank, Wells Fargo, Countrywide Financial)

[https://en.wikipedia.org/wiki/Paul\\_Jorion](https://en.wikipedia.org/wiki/Paul_Jorion)

pj@pribor.io | +33 (0) 06 27 25 63 35



## **Manuel GUERIN**

### **Managing Director**

Master Paris X

Oil and gas executive, Entrepreneurship

mg@pribor.io | +33 (0)6 50 59 66 27

# Our Journey Ahead

**Core technology development and testing.**

**Initial R&D and user testing for applications. Start of prototype development.**

**Beta testing, initial revenue generation through licensing, and full product launch.**

**Market expansion, continued innovation, and growth.**

2023

2024

2025

2026

Human being simulation with drives and memory without self-awareness

*Proof of concept*

Human being simulation with drives and memory

+

self-awareness

*Ordinary everyday conversation*

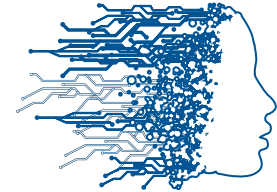
Human being simulation with drives and memory

+

self-awareness

+

superego



---

**With an accelerated development timeline, Pribor is poised to launch its revolutionary product by mid-2025, paving the way for market expansion and continued growth**

---

# Partner with Us

## Our Needs

### Investment

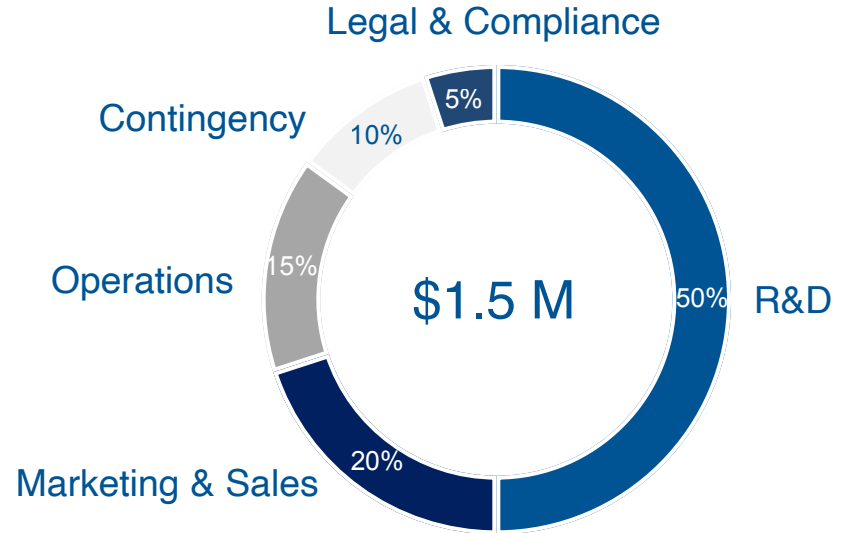
We're seeking \$1.5 million in seed funding to support our technology development, initial testing, and go-to-market strategy.

### Partnerships

We're open to strategic partnerships that can help us accelerate our development, gain market access, or enhance our product offering.

### Advisors

We're looking for advisors with expertise in AI, business development, and the sectors we're targeting to join us on our journey.



---

With your investment, partnership, or guidance, Pribor can revolutionize the AI industry and create significant value for our customers and stakeholders.

---



**“Better three hours too soon than  
a minute too late.”**

William Shakespeare on deeptech

**Thank you**